

Prospectus



UNIVERSITY OF
ZULULAND

YEARS
1960-2020

MY UNIZULU.YOUR UNIZULU.OUR UNIZULU



UNIZULU CAMPUSES

Main Campus - KwaDlangezwa
Richards Bay Campus

UNIZULU Introduction

The University of Zululand prides itself in providing academic excellence since its inception in 1960 and having produced leaders in government, community development, education, science, law, commerce and industry. UNIZULU offers a variety of degree and diploma programmes across its four faculties, namely Science and Agriculture, Commerce, Administration and Law, Arts and Education. All programmes are internationally recognised. UNIZULU comprises of two campuses based at KwaDlangezwa in Empangeni and Richards Bay. The KwaDlangezwa Campus is UNIZULU's main campus. The Richards Bay Campus was completed in 2009 and is intended to further the University's entrepreneurial and vocational agenda in conjunction with local industry partnerships and the maritime sector. All diploma and national higher certificate courses are delivered at the Richards Bay campus. Both campuses have been designed to enhance the students' experience with state-of-the-art computer labs, sports and recreational facilities as well as library access. Students have access to more than 17 sports codes with numerous religious, academic and social bodies and societies based on both campuses.

Vision

a Leading, comprehensive University providing quality education.

Mission

To provide globally competitive graduates, relevant for the human capital needs of our country, by providing quality education which upholds high standards of research and academic excellence.

Why study with UNIZULU?

- It is the only comprehensive university north of the uThukela River
- It aspires to be a leading comprehensive university providing quality education
- It has the best Science Centre in Africa
- It undertakes research relevant to local communities
- It recognises academic excellence through scholarships
- We boast producing graduates who have gone on to occupy key positions both in public and private sectors





CONTENTS-page

Admission requirements	6
How do I calculate points?	7
How do I apply?	8-9
What programmes do we offer for undergraduate studies?	10
Faculty of Commerce, Administration and Law.....	11
Faculty of Science and Agriculture.....	12
Faculty of Arts.....	13
Faculty of Education.....	14-15
Cost and financial assistance?.....	16-17
(NSFAS)National Student Financial Aid Scheme?.....	18-20
How to contact UNIZULU?.....	21
Library and Information Services?.....	22-23
What are student support services, residence accommodation for students and campus life?.....	24-29



Admission to UNIZULU

The first step when applying for admission at the University is deciding on the **qualification** you wish to obtain. Upon acceptance, depending on the chosen course, you are then admitted to a one of the institution's four faculties.

Entry Requirements

Your application will only be considered for admission if you qualify and meet the faculty requirements. **NOTE: Meeting the minimum admission requirements only means that you are eligible for selection, NOT that you will necessarily be accepted.**



How to calculate your admission points

NSC rating level of performance	Percentage
7	80% - 100%
6	70% - 79%
5	60% - 69%
4	50% - 59%
3	40% - 49%
2	30% - 39%
1	0 - 29%

SENIOR CERTIFICATE		
Symbol	Higher Grade	Standard Grade
A	8	6
B	7	5
C	6	4
D	5	3
E	4	2
F	3	1

Example of how to calculate points

EXAMPLE		
Subject	Percentage	Points
English Home Language	75%	6
Isizulu first/Isixhosa/Afrikaans/ Additional language	90%	7
Mathematics	80%	8
Life Sciences	62%	5
Physical Sciences	72%	6
Life Orientation	68%	0
TOTAL POINTS		32





GET YOUR DOC'S IN A ROW

Closing dates: 30 September 2020

How do I apply

Prospecting students must apply for admission to an undergraduate qualification via the Central Applications Office (CAO) on www.cao.ac.za.

Remember to have the following documents ready:

- National Senior Certificate or statement of results or,
- Senior Certificate
- Copy of ID
- Additional documentation for international prospective students:
- Copy of passport
- Study permit
- Medical aid/health insurance cover

For further information **regarding the application process**

Please Contact CAO on **031 268 4444** or visit www.cao.ac.za or send an email to Admissions@unizulu.ac.za.





UNDERGRADUATE STUDIES

Main Campus - KwaDlangezwa
Richards Bay Campus

FACULTY OF Commerce, Administration & Law

CONTACT NUMBER: 035 902 6539/6129

Qualification Title	Years	Min Points	Min Admission Points
Higher Certificate (Accountancy)	1	22	NSC with an achievement rating of 22 points, English level 3 (or SG level D or HG level E), and Mathematical level 3 or Mathematics Literacy level 4 (or SG level D or HG level E)
National Higher Certificate (Marketing)	1	22	NSC with an achievement rating of 22 points, English level 3 (or SG level D or HG level E), and Mathematical level 3 or Mathematics Literacy level 4 (or SG level D or HG level E)
Diploma (Logistics Management)	3	24	NSC with an achievement rating of 24 points, English HL level 3 (or SG level D or HG level E), Mathematical Literacy level 3 or Mathematics Literacy level 4
Diploma (Management of Co-operatives)	3	24	NSC with an achievement rating of 24 points, English level 3 (or SG level D or HG level E), and Mathematics Literacy level 4 or Mathematics level 3 (or SG level D or HG level E)
Diploma (Transport Management)	3	24	NSC with an achievement rating of 24 points, English level 3 (or SG level D or HG level E), Mathematical level 3 or Mathematics Literacy level 4
Bachelor of Commerce (Accounting)	3	28	NSC with degree endorsement and an achievement rating of 28 points, English level 4 and Mathematics level 4 OR Maths either B 'SG' or C 'HG' and English either B 'SG' or C 'HG'
Bachelor of Commerce (Accounting Science)	4	32	NSC with degree endorsement and an achievement rating of 32 points, English level 5, Maths level 5 / OR Maths either B 'SG' or C 'HG' and English either B 'SG' or C 'HG'
Bachelor of Commerce 4-Year Extended Programme	4	26	NSC with degree endorsement and an achievement rating of 26 points, English level 3 (or SG level D or HG level E), and Mathematics level 3 or Mathematical Literacy level 4 (or SG level E)
Bachelor of Commerce	3	28	NSC with degree endorsement and an achievement rating of 28 points, English level 4 (or SG level C or HG level D), and Mathematics level 3 or Maths Literacy 6 (or SG level D or HG level E)
Bachelor of Commerce (Management Information Systems)	3	28	NSC with degree endorsement and an achievement rating of 28 points, English level 4 or SG level C or HG level D), and Mathematics level 4 (or SG level C or HG level D)
Bachelor of Administration	3	28	NSC with degree endorsement and an achievement rating of 28 points, English level 4 (or SG level C or HG level D), and Mathematics level 3 or Maths Literacy 4 (or SG level D or HG level E)
Bachelor of Laws	4	30	NSC with degree endorsement and an achievement rating of 30 points, English level 4 (or SG level C or HG level D), and Mathematics level 3 or Maths Literacy 4 (or SG level D or HG level E)

FACULTY OF Science & Agriculture

CONTACT NUMBER: 035 902 6306/6649

Qualification Title	Years	Min points	Min Admission Requirements
BSc: Mainstream	3	28	<p>The Faculty of Science and Agriculture has 14 Departments. We offer focused BSc programmes and 37 dual major programmes. The focused programmes include: Agriculture (Animal Science, Agronomy and Agribusiness), Nursing Science and B. Consumer science. For the 37 dual majors, combinations are based on the following:</p> <ul style="list-style-type: none"> • Applied Mathematics • Physics • Mathematics • Hydrology • Computer Science • Human Movement Science • Microbiology • Biochemistry • Chemistry • Geography • Botany • Zoology <p>NSC with a pass of at least 60% (level 5) in Mathematics for programmes which include combinations majoring in either Applied Mathematics /Mathematics /Statistics/ Chemistry/ Computer Science/ Physics. For other programme combinations, at least a 50% (level 4) in Mathematics.</p> <p>At least 50% (level 4) in Physics for programmes with a major in Geography, Hydrology and Human Movement Science</p> <p>At least 40% (level 3) in Physics for programmes which includes combinations majoring in either Biochemistry/ Botany / Microbiology/ Zoology.</p> <p>All our BSc mainstream programmes further require at least 50% (level 4) in English.</p> <p>For Life science programmes, at least 50% (level 4) in Life Science.</p> <p>For programmes with a major in Geography, at least 50% (level 4) in Geography.</p>
BSc: Agriculture: Agronomy / Animal / Agribusiness	4	28	NSC pass with at least 50% (level 4) in Mathematics, Physics / Geography, Agricultural Sciences/Life Sciences and English
BSc: Augmented Stream	4	28	This programme is for candidates that do not meet BSc mainstream requirements but have 28 NSC points with 40% (level 3) in Maths, Agricultural Science, Life Science, Physical Sciences and/or Geography. 40% (level 3) in English second language or 50% (level 4) in English first language is a requirement.
BSc: Foundation Stream	4	26	Candidates who do not qualify for the BSc mainstream or Augmented stream but have a NSC or its approved equivalent, with at least 26 points and at least 40% (level 3) in one of the Agricultural Sciences, and at least 40% (level 3) in Mathematics, have at least 40% (level 3) in one of the Agricultural Sciences or life science, and at least 40% (level 3) in English first language , and at least (level 2) in Physics.
Environmental Planning & Development	4	26	NSC-Deg with level 4 for English at Home Language or level 3 at First Additional Language and Geography 50% (level 4)
B Consumer Science: Extension and Rural Development	4	28	NSC-Deg or its approved equivalent, a minimum of 28 points and a pass of at least 50% (level 4) in English, Life Sciences/ Agic and life Orientation.
B Consumer Science: Hospitality and Tourism	3	28	NSC-Deg or its approved equivalent, a minimum of 28 points, and a pass of at least 50% (level 4) in English and life Orientation.
Diploma in Sport and Exercise technology	3	26	NSC-Dip with at least 26 points, a pass of at least 40% (level 3) in four recognised NCS 20-credit subjects, at least 40% (level 3) for English at First Additional Language or at least 50% (level 4) for English as Home Language.
Diploma in Hospitality Management	3	26	NCS-Dip with a pass of at least 40% (level 3) in four recognised NCS 20- credit subjects, a pass of at least 50% (level 4) for English.

FACULTY OF Arts

CONTACT NUMBER: 035 902 6572/6087

Qualification title	Years	Minimum Points	Min Admission Requirements
BA	3	26	NSC with an achievement rating of 3 (moderate achievement, 40-49%) or better in 4 recognised NSC 20-credit subjects; an achievement rating of 4 (50-59%) in Life Orientation and an achievement rating of 4 (50-59%) in English as a Home Language (Matric Exemption)
BA Correctional Studies	3	28	NSC pass with an achievement rating of 3 (moderate Achievement, 40-49%) or better in 4 recognised NSC 20-credit subjects; an achievement rating of 4 (50-59%) in Life Orientation and an achievement rating of 4 (50-59%) in English as a Home Language (Matric Exemption)
BA Development Studies	3	26	NSC pass with an achievement rating of 3 (moderate achievement, 40-49%) or better in 4 recognised SC 20-credit subjects; an achievement rating of 4 (50-59%) in Life Orientation and an achievement rating of 4 (50-59%) in English as a Home Language (Matric Exemption)
BA Environmental Planning & Development	3	26	NSC with Degree Endorsement and an achievement rating of 4 (50-59%) in English and an achievement rating of 4 (50-59%) in Geography (Matric Exemption)
BA Industrial Sociology	3	26	NSC with an achievement rating of 3 (moderate achievement, 40-49%) or better in 4 recognised NSC 20-credit subjects; an achievement rating of 4 (50-59%) in Life Orientation and an achievement rating of 4 (50-59%) in English as a Home Language (Matric Exemption)
BA Intercultural Communication	3	26	NSC with an achievement rating of 4 (50-59%) in 4 recognised NSC 20-credit subjects; an achievement of 4 (50-59%) in Life Orientation; and an achievement rating of 4 (50-59%) in English as Home Language and achievement rating of 3 in English as First Additional Language (Matric Exemption)
BA Information Science	3	26	NSC with an achievement rating of 3 (moderate achievement, 40-49%) or better in 4 recognised NSC 20-credit subjects; and achievement rating of 4 (50-59%) in Life Orientation and an achievement rating of 4 (50-59%) in English as a Home Language (Matric Exemption)
Bachelor of Library and Information Science	4	26	NSC with an achievement rating of 3 (moderate achievement, 40-49%) or better in 4 recognised NSC 20-credit subjects; an achievement rating of 4 (50-59%) in Life Orientation and an achievement rating of 4 (50-59%) in English as a Home Language (Matric Exemption)
BA Psychology	3	28	NSC with degree endorsement OR Matric Exemption and an achievement rating of 4 (50-59%) in English, Social Science and Physics. Selected candidates will be interviewed for suitability
BSocSci in Political & International Studies	3	30	NSC with an achievement rating of 5 (60-69%) in English and Geography, achievement rating of 4 (50-59%) in Mathematics or rating 5 (60-69%) in Maths Literacy; rating of 5 (60-69%) in History or Economics (Matric Exemption)
BA Drama, Theatre & Performance	3	26	NSC with an achievement rating of 3 (moderate achievement, 40-49%) or better in 4 recognised NSC 20-credit subjects; an achievement rating of 4 (50-59%) in Life Orientation and an achievement rating of 4 (50-59%) in English as a Home Language (Matric Exemption)
Bachelor of Tourism Studies	3	26	NSC with degree endorsement OR Matric Exemption an achievement rating of 4 (50-59%) in English and Geography or Tourism
Diploma in Tourism Management	3	24	NSC with an achievement rating of 4 (50-59%) in English and appropriate subject combinations and levels of achievement. Alternatively a Higher Certificate or Advanced Certificate in a cognate field
Diploma in Media Studies	3	24	NSC with an achievement rating of 3 (moderate achievement, 40-49% or better in 4 recognised NSC 20-credit subjects; an achievement rating of 4 (50-59%) in Life Orientation and an achievement rating of 4 (50-59%) in English as First Additional Language (FAL), or 4 (50-59%) in English as Home Language (Matric Exemption)
Diploma in Public Relations Management	3	24	NSC with an achievement rating of 3 (moderate achievement, 40-49% or better in 4 recognised NSC 20-credit subjects; an achievement rating of 4 (50-59%) in Life Orientation and an achievement rating of 4 (50-59%) in English as First Additional Language (FAL), or 4 (50-59%) in English as Home Language (Matric Exemption)

FACULTY OF Education

CONTACT NUMBER: 035 902 6348 / 6333

Qualification Title	Years	Min Points	Min Admission Points
Bachelor of Education in Foundation Phase Teaching	4	26	NSC pass with Isizulu HL 4 and Engl FAL 4 and Maths 3/Maths Lit 4 OR SC Matric Exemption with Isizulu 1st lang 'D' HG/'C' SG and Engl 'D' HG/'C' SG and Maths 'E' HG/'D' SG
Bachelor of Education in Intermediate Phase Teaching: Languages and Humanities	4	26	NSC pass with IsiZulu 4 and Engl 4 and Geog and Hist 4 OR SC Matric Exemption with Isizulu 'D' HG/'C' SG and Engl 'D' HG/'C' SG and Geog and Hist 'D' HG/'C' SG
Bachelor of Education in Intermediate Phase Teaching: Languages, Maths, Science & Technology	4	26	NSC pass with IsiZulu FAL/HL 4 and Engl HL/FAL 4 and Maths 4 and Phys Sci 3 or Maths 3 and Phys Sci 4 OR SC Matric Exemption and Isizulu 1st/2nd lang 'D' HG/'C' SG and Engl 1st/2nd lang 'D' HG/'C' SG and Maths 'D' HG/'C' SG and Phys Sci 'E' HG/'D' SG OR Phys Sci 'D' HG/'C' SG and Maths 'E' HG/'D' SG
Bachelor of Education in Senior & FET Phase Teaching (Social Science Education - SSE)	4	26	NSC pass with Engl AND Geog AND Hist 4 OR SC Matric Exemption with Engl and Geog and Hist 'D' HG/'C' SG
Bachelor of Education in Senior & FET Phase Teaching (Maths, Science & Technology Education - MSTE)	4	26	NSC pass with Engl 4 and Maths 5 and Phys Sci 4 OR Maths 4 and Phys Sci 5 OR SC Matric Exemption with Engl 'D' HG/'C' SG and Maths 'C' HG/'B' SG and Phys Sci 'D' HG/'C' SG OR Maths 'D' HG/'C' SG and Phys Sci 'C' HG/'B' SG
Bachelor of Education in Senior Phase & Further Education & Training Teaching (Economics and Management Sciences - EMS)	4	26	NSC pass with Engl 4 and Acc and Bus and Econ 4 OR SC Matric Exemption with Engl and Acc and Bus Econ and Econ 'D' HG/'C' SG

PLEASE NOTE THE FOLLOWING:

- All these requirements are compulsory.
- Preference is given to applicants who rank this programme as choice number 1 or 2.
- USAf (HESA) letter is required for mature age students

For further information on all our programmes

please visit: www.unizulu.ac.za





Costs and financial assistance?

Tuition Fees

Fees are charged per module on a semester basis for undergraduate students.

Tuition fees include laboratory and examination fees (excluding re-examination fees), library subscriptions, student facilities and personal accident insurance. **Charges relating to the provision of additional material, e.g. supplementary/lecture notes, field trips, practical fees, where applicable, will be raised separately, depending on the particular modules for which students are registered.** Prescribed text books are explicitly excluded from the tuition fees.

IMPORTANT: The fees listed below are for guideline purposes only.

They indicate the approximate amounts payable by students who are registered for a full year on a full-time basis in the 2020 academic year. The actual fees payable by a student will depend on the specific modules for which they are registered during the year. In the event of an error or omission, the full fees as calculated and approved by the University are payable.

Bachelor's Degree (per module)

Arts	R3 368
Commerce, Administration & Law	R3 368
Science and Agriculture	R3 368
Education	R2 524

Residence Fees

The University has on-campus (KwaDlangezwa) and off campus residences, provided by various external service providers that meet the minimum requirements as prescribed by the University. **The cost of accommodation provided by external service providers is charged to the respective student's account.** On-campus residence costs vary from an average of R8,599 to R28,522 in the 2020 academic year.

Refer to the link below for detailed information on 2020 fees, as a guideline.

<http://www.unizulu.ac.za/wp-content/uploads/2020/01/Fees-and-Finances-2020-booklet.pdf>

Accurate 2021 fees, which will be approved by the University Council, will be available on the UNIZULU website towards the end of 2020. Be on the lookout.

Students funded by bursary or scholarship

An award letter, addressed to the University, should be obtained from each sponsor on an official letterhead and company stamp with the relevant signature, confirming the details of the award (i.e. tuition, books, meals, etc.) and the amount of funding, clearly indicating that the funds will be paid **TO THE UNIVERSITY (NOT THE STUDENT)**. This must be submitted to the Student Financial Aid Offices at least two (2) days prior to Registration for early financial clearance.

(NSFAS) National Student Financial Aid Scheme

Apply for a NSFAS study bursary today and make 2021 your year

The National Student Financial Aid Scheme (NSFAS) is a public entity reporting to the Department of Higher Education and Training. NSFAS provides financial assistance in the form of a study bursary to qualifying students who wish to study or are already studying at TVET colleges and public universities.

WHAT DOES THE NSFAS BURSARY COVER?

Applicants who are approved for NSFAS funding are covered for the following:

- Registration
- Tuition

Allowances for:

- Food
- Accommodation or transport
- Learning material
- Personal care

Who Qualifies for the bursary?

You qualify for a NSFAS bursary if you are a South African citizen who plans to study in 2021 or you are already studying at a public university or TVET college and you meet the **following requirements:**

- **SASSA grant recipients or**
- **Your combined household income is not more than R350 000 per year or**
- **Person with a disability with a combined household income of not more than R600 000 per year or**
- **Student who begun their university studies before 2018 and their household income is not more than R122 000 per year**

What is required during the application process?

NSFAS may need more information from you to process your application, check what supporting documents are required and ensure that you have all the relevant information.

You will need the following to complete your NSFAS application:

- Your own cellphone number and email address
- Copy of your ID or birth certificate
- ID copies of parents, guardian or spouse
- Your proof of income or 1 year's IRP5 (if applicable)
- Your parents, guardian or spouse's proof of income
- If you are a SASSA grant recipient, no proof of income will be required
- Applicants with a disability must submit a completed and signed Disability Annexure A Form
- An applicant who is recognised as a Vulnerable Child by the Department of Social Development must provide a completed and signed Vulnerable Child Declaration and Consent Form

HOW AND WHERE to apply for NSFAS

**You can apply online using a cellphone, tablet or computer.
Follow these simple steps to apply:**

Step 1: Go to www.nsfas.org.za and **click on** the 'myNSFAS' tab

Step 2: Create a myNSFAS account

Step 3: **Click on** the 'APPLY' tab and answer the questions on the screen

Step 4: Upload the required supporting documents then **click on 'submit'**

After you **click on 'submit'**, your **application reference number** will **appear on the screen**. The reference number will also be sent to the cellphone number and email address you provided.

**Contact NSFAS via
THE NSFAS VIRTUAL CONTACT CENTRE**
www.nsfas.org.za and log into your myNSFAS account

 National Student Financial Aid Scheme

 @myNSFAS

 @myNSFAS

 info@nsfas.org.za

APPLICATIONS CLOSE ON NOVEMBER 30, 2020
Apply now and unlock your future today.

How to contact UNIZULU?

Student Admissions

- KwaDlangezwa Campus: 035 902 6178/6177/6051
- Richards Bay Campus: 035 902 6950/6923
- International calls: +27 31 268 4444
- Faculty of Commerce, Administration and Law: 035 902 6539/6129
- Faculty of Education: 035 902 6348/6333
- Faculty of Science and Agriculture: 035 902 6306/6649
- Faculty of Arts: 035 902 6087/6366
- Financial Aid: 035 902 6308/6309/6679
- Library and Information Services: 035 902 6466
- Student Housing: 035 902 6179/6626

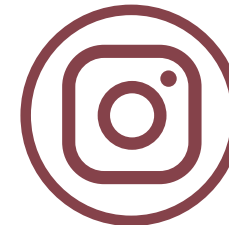
Website: www.unizulu.ac.za



Like us on
Facebook
University of Zululand



Follow us on
Twitter
@UNIZULUongoye



Follow us on
Instagram
@unizulu_official



Find us on
Youtube
UNIZULU Official

CONNECT ON SOCIAL MEDIA





Library and Info Services

UNIZULU has libraries situated on both the KwaDlangezwa and Richard Bay campuses. The main library situated on the KwaDlangezwa Campus is a multi-storey building with modern furniture and equipment. The library provides both print and electronic resources, with most services available on site and online. **Student information services are offered by information librarians who organise library orientation for first-time entering students as well as other user education and training programmes.** Information librarians also assist and advise on related enquiries such as information retrieval, referencing and plagiarism, to mention a few. Workshops are tailored to specifically support the teaching and learning as well as community engagement processes of all UNIZULU students and academics.



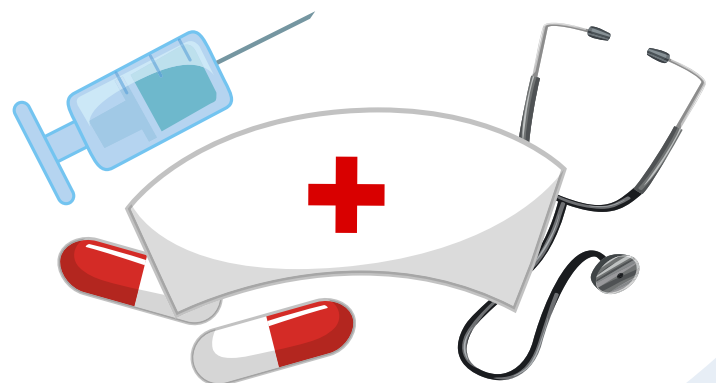
Student Services Department

The department is led by the Dean of Students and its strategic objective is to support the University's academic project through alignment to the University's goals. It strives to achieve this through capacitation of student leadership, delivery of student activities that are aligned to the University goals and through promotion of co-curricular activities.

The department is constituted by six divisions, namely Campus Health Clinic, Student Housing, Disability Unit, Sports and Recreation, Student Governance (Societies Administration) as well as Guidance and Counselling. Each unit has a manager overseeing respective activities contributing to the Student Service Department.

Campus Health Clinic

The University, through its Campus Health Clinic, provides essential and comprehensive health care for students. It is therefore important that the clinic is accessible to all students and promotes health in line with the Batho-Pele principles in general and the University values in particular. While the clinic strives to adhere to the values of the University as embraced by the Student Services Department, it has its specific values which include commitment to performance, adherence to strict confidentiality and embracing cultural diversity. **With the advent of the coronavirus pandemic, the Campus Health Clinic has been responsible for Covid-19 screenings of students and staff and the provision of protective gear, sanitisers and masks.**



What to Know about our health clinic

The Campus Health Clinic pursues the following strategic themes in order to help the Student Services Department accomplish its mission and vision:

- **Health promotion;**
- **Curative health;**
- **Health awareness campaigns; and**
- **Reproductive healthcare.**



General location:

KwaDlangezwa Campus - On the Southern side of the campus opposite the King Bhekuzulu Hall and near the Protective Services Department.

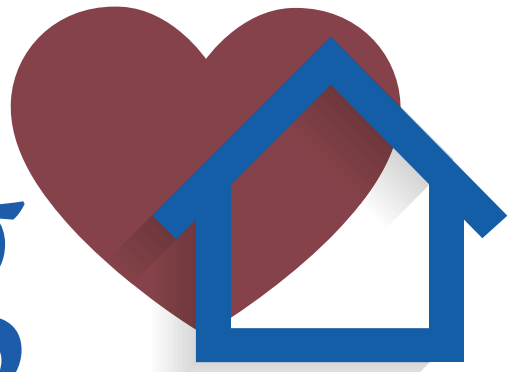
Richards Bay Campus Clinic – Located next to the main hall on the ground floor.

Consulting Hours

- **Monday to Thursday (08h00 to 16h00)**
- **Friday (08h00 to 14h45)**
- **Holidays, Weekends and After Hours**

(Emergency Services – Contact numbers 035 9026 5699 or 071 883 9289 or Speed Dial 56289)

Student Housing



UNIZULU provides home-away-from-home suitable accommodation both on campus and privately rented accommodation. We provide both mixed residences as well gender dedicated residences.

The Student Housing section strives to offer students a conducive living and learning experience within an environment that recognises and rewards individual and group development efforts. **We offer affordable accommodation at the KwaDlangezwa and Richards Bay campuses.** The University offers a total number 5899 residences constituted by 4147 on-campus beds, 848 KwaDlangezwa rented beds and 904 Richards Bay rented beds. Students are supported by assistant wardens and wardens supported by house committees who represent residence students.

The Student Housing section provides accessible, affordable, safe and healthy environment that is conducive to learning. Both registered and returning students may apply for accommodation via an online self-service platform at a date announced by the department each year. Successful applications for residence are subject to the residence placement criteria. In addition to this, students who are accepted to the residences must complete their residence registration to avoid forfeiting the room. Failure to register for residences at the beginning of each academic calendar may result in the forfeiture of a residence space. This includes both postgraduate and international students.



Admission to University Residences

Preference is given to students who do not live in close proximity or in surrounding communities to the campuses.

Applications will also be considered on merit. Accommodation is limited and is available on a first-time-first-served basis.

Vacation Period:

At the end of the academic calendar, all students living in the residences are required to vacate their allocated rooms. Each student is given a maximum of 48 hours to vacate at the end of his/ her last examination.



Postgraduate students who wish to remain behind for research based activities will only be allowed if the head of their respective department writes a letter to the Student Housing section confirming the said student is required to remain during the long-term recess in order to do research. In the absence of this confirmation no student will be allowed to remain in residences during June and December recess periods.

Students are required to sign in and complete inventory forms with residence officials in their respective residences. It is also essential to sign out with your residence official during the vacation. When students are vacating residences, they are required to please hand over their keys to their respective assistant wardens or wardens.

**Contact: khomom@unizulu.ac.za
035 902 6588 OR 063 407 3215**

Student Governance (Society Administration)

There are various recognised student formations which are broadly classified into four categories, that is **academic societies, cultural societies, extra-curricular formations and political formations**. The Office of the Dean of Students (through the Student Governance section) supports these various societies in ensuring that they are in good standing. Workshops are conducted for capacity building to enable them to deliver according to their specific programmes of action. Each society is given an allocation from the societies' levy to implement its programme of action. Best performing societies are rewarded or recognised during a societies' banquet. Leadership forums on matters of interest are usually conducted to get a broad buy-in from the societies and to ensure shared attributions on institutional matters pertaining to transformation. The Student Representative Council is a legitimate structure for student governance and accounts to the Dean of Students. The University choir is part of student societies and an anchor and ambassador for the University as it chorally presides during graduations and is often invited externally to prestigious events.

Contact: 035 902 6971
Email: mnisit@unizulu.ac.za

Student Disability Unit

The Disability Unit's primary task is to respond to the needs of individual students with disabilities. These needs may be in the form of residences, academic accommodation and social adjustments. The unit acts as a link between students and different sections of the University. UNIZULU, being a comprehensive university, puts students with disabilities at the centre of its services.

The University has further broadened its mission and scope towards becoming more inclusive as well as ensuring the protection of the constitutional rights of students with disabilities. Through this section, the University strives to ensure that students with disabilities have a positive experience with regards to academic support and social activities. In 2020, the University handed the Disability Unit a computer lab with new computers dedicated for students with disabilities.

Contact: MjaduP@unizulu.ac.za
064 769 1923 or 035 902 6398

Guidance and Counselling



Guidance and Counselling offer a range of services to provide support before, during and after the completion of your UNIZULU studies. We provide career, academic and personal guidance and counselling to prospective and registered students designed to nurture well rounded persons and also assist students to be best persons that they can be.

The Student Counselling Centre has psychologists who adhere to the ethical rules of the Health Professions Council of South Africa hence discussions with students about their careers, academic, and personal development are private and confidential. Psychological Services essentially focuses on different forms of counselling, including individual therapy, couple's therapy, group therapy and psychoeducation. Support groups are available on request.

There are peer helpers who are the ears and eyes of the Guidance and Counselling, they identify students who are at risk and refer them accordingly. Guidance and Counselling runs a mandatory orientation program for the FTENS to assist them in their tertiary adjustment.

Guidance and Counselling also offers life skills programs for the personal growth and development of students and also combat social ills like Gender Based Violence which led to the establishment of a men's forum referred to as BE A MAN.

Other life skills offered include:

- **Time management**
- **Exam preparation**
- **Stress management**
- **How to deal with peer pressure**
- **Job hunting skills**

Contact:

NN Makalima - T: 035 902 6342 E: MakalimaN@unizulu.ac.za

Sport and Recreation

The unit is responsible for recruiting students to participate in sport as well as managing all sporting codes, amongst others, soccer, rugby, netball and cricket. The section supports all registered sporting codes through the provision of coaching services and sports uniform. The section prepares athletes for league games and USSA games.

**Contact: moagii@unizulu.ac.za
035 9026627**

CAMPUS Life



#GetInvolved
MY UNIZULU, YOUR UNIZULU, OUR UNIZULU





Communications and Marketing Division

Ground Floor, Administration Building, KwaDlangezwa Campus
Tel: +27 35 902 6668 Email cmd@unizulu.ac.za Web: www.unizulu.ac.za